



**700 MHz**

## **Antenna & Service Guide**



Multiple Solutions  
Various Patterns and Gain  
Coaxial, Dipole and Patch Designs

[www.alivetele.com](http://www.alivetele.com)

# 700 MHz Antennas

## ATC-7SXH

### High Power 3kW to 18kW

Coaxial Pylon Style Antenna

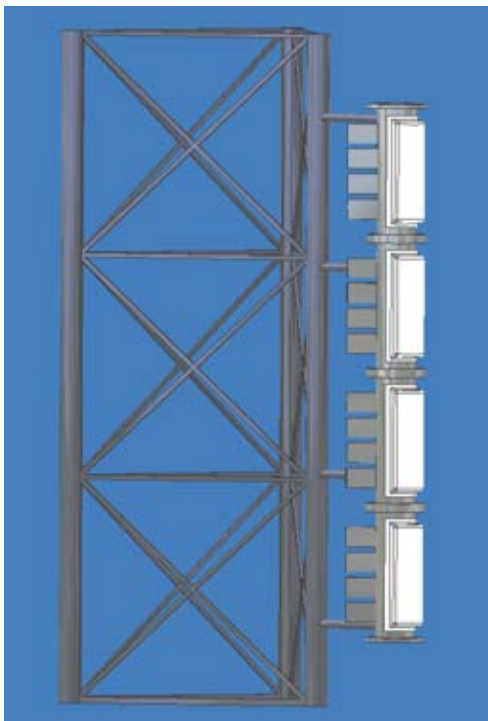
Offered Horizontal, Vertical, or Circular Polarization

Slot Cover and Full Radome

Available Pressurized or Unpressurized

1-5/8" or 3-1/8" 50 ohm EIA Input (power determinate)

Tower Top or Side Mount



8 to 24 Bay Elevation Gains

0.75 Degree Beam Tilt Std

<1.08 VSWR 6 MHz Band

<1.10 VSWR 10 MHz Band

<1.20 VSWR 18 MHz Band

<1.30 VSWR 30 MHz Band

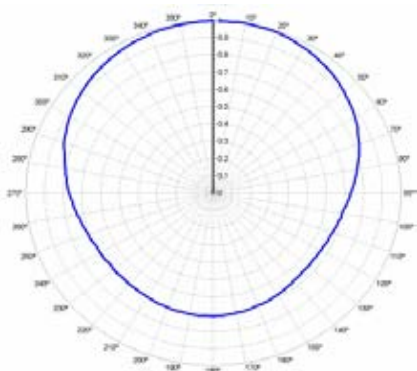
Antenna Part Number Nomenclature

ATC-Antenna Type Polarization Beam Tilt EL Gain Az PAT – Channel/Band

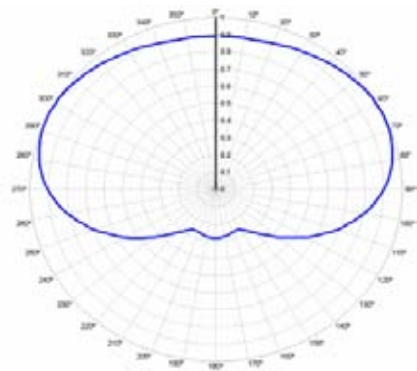
4 bay Horizontal 90 Degree 0.75 BeamTilt Panel

ATC-7PH3490-55

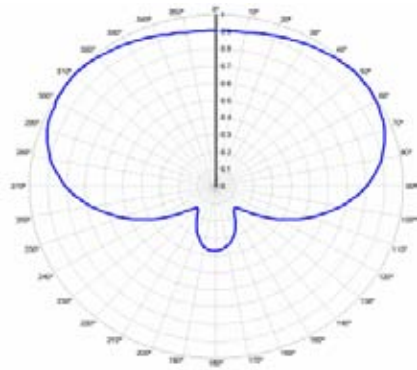
# Azimuth Patterns



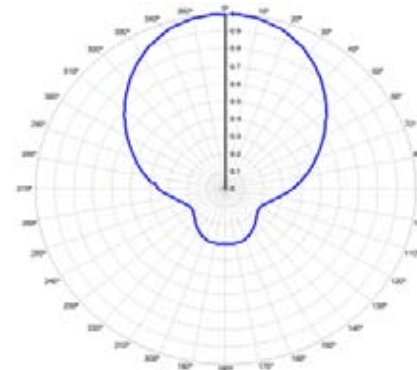
Omnioid



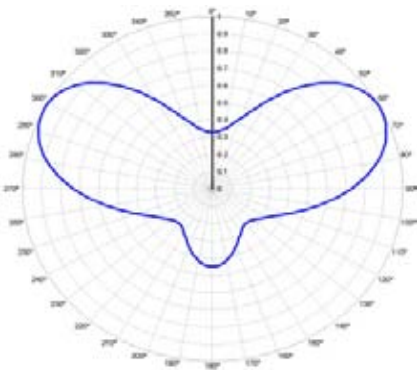
C1



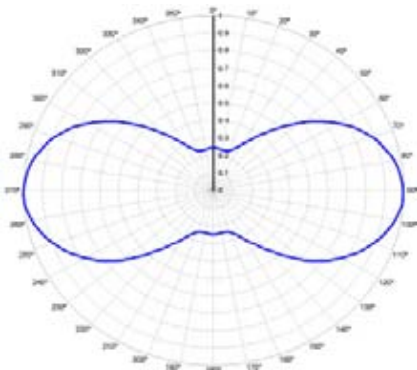
C2



C3



B1



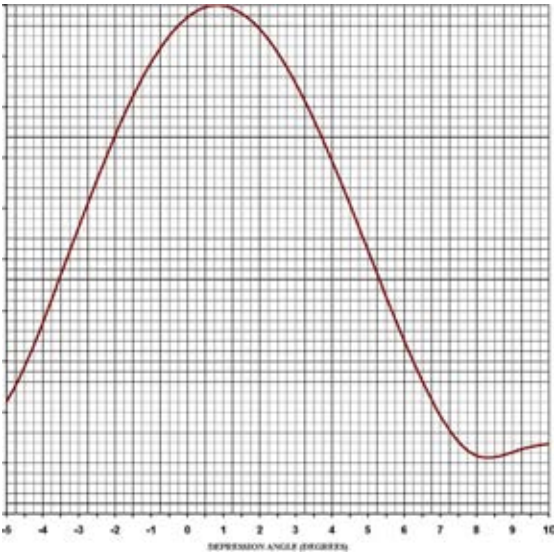
P1



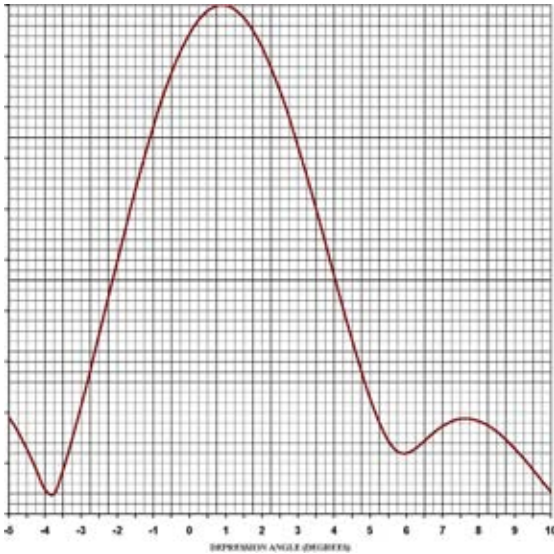
Omni-Directional and Custom  
Patterns Available



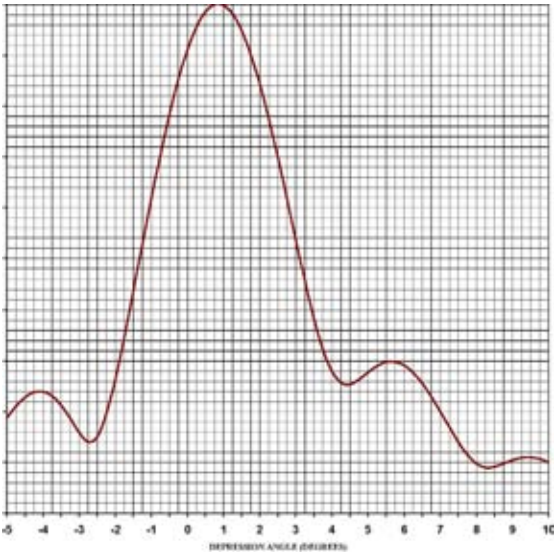
# Elevation Patterns



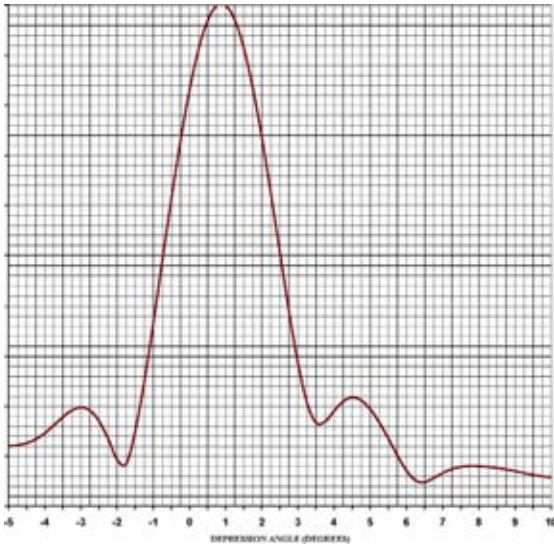
8 Bay 9.5 dBd



12 Bay 11 dBd



16 Bay 12.3 dBd



24 Bay 14 dBd



# Mechanical Data Low & Mid Power Antennas

<u>Channel</u>	<u>Height (ft)</u>	<u>Weight (lb)</u>	<u>Windload (lb)</u>
<b><u>4 Bay</u></b>			
14-30	10.5	60	200
31-45	9.6	57	190
46-61	8.5	55	180
62-69	8.0	50	170
<b><u>8 Bay</u></b>			
14-30	20.5	120	390
31-45	18.4	114	370
46-61	16.4	110	350
62-69	15.0	100	330
<b><u>12 Bay</u></b>			
14-30	30.0	175	575
31-45	18.4	170	545
46-61	24.0	165	515
61-69	22.0	160	490
<b><u>16 Bay</u></b>			
14-30	40.4	240	770
31-45	35.4	230	730
46-61	31.4	220	690
62-69	29.0	210	660
<b><u>24 Bay</u></b>			
14-30	58.4	345	1150
31-45	53.3	325	1090
46-61	47.3	305	1030
62-69	43.0	290	980
<b><u>32 Bay</u></b>			
14-30	78.0	435	1535
31-45	70.8	415	1450
46-61	62.8	395	1370
62-69	57.0	380	1310



## ATC-BC8 LPTV Antenna

8 BAY Low Power Television Antenna

Omnioid, C1, C2, C3 & P1 Azimuth Patterns

7/8" EIA 50 ohm Input - 1.5 kW Max Average Power

1.5 Degrees Standard Beam Tilt

<1.08 VSWR across 6 MHz Channel

Lightweight Aluminum Construction

Slot Cover Radome

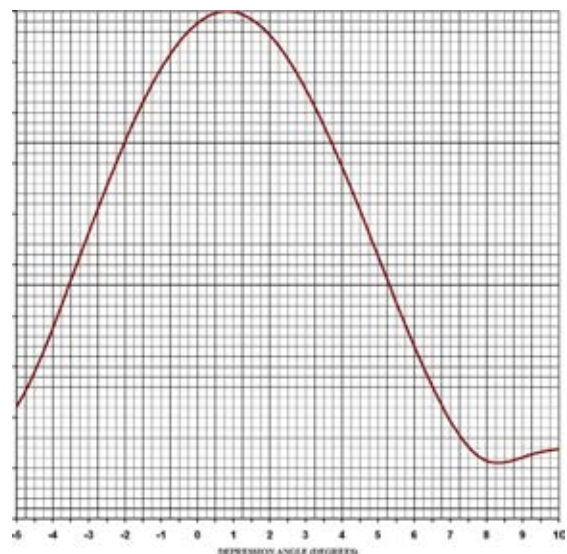


1-5/8" EIA 50 ohm Input

5 kW Max Average Available

Pressurized or Unpressurized Styles

2 and 3 Channel Wide Versions Offered



# 700 MHz Medium Power

## ATC-7SXM

### Medium Power 1kW

Coaxial Slot Antenna 7/8" EIA 50 ohm Input

Horizontal, Vertical or Circularly Polarized

Bays	Gain (dBd)	Length (in)	Weight (lbs)
2	5.2	52	29
4	8.4	96	62
8	11.6	180	100

Typical for H-Pol Omnioid

## ATC-7PXM

### 1kW Panel

Low Profile Panel 698—806 MHz

<1.1 VSWR

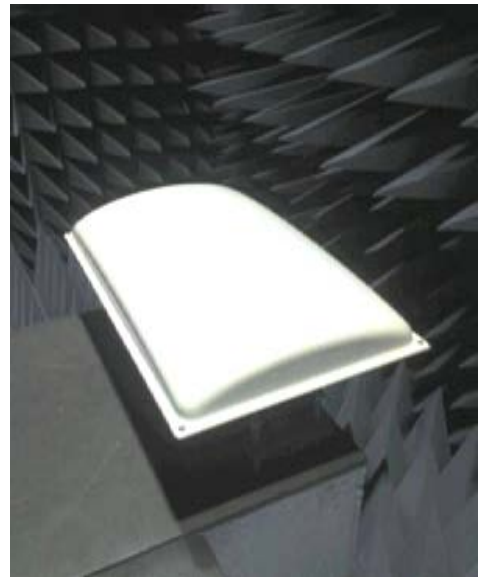
15" W x 25" L x 3" H - 22 lbs

Sector 60 90 120

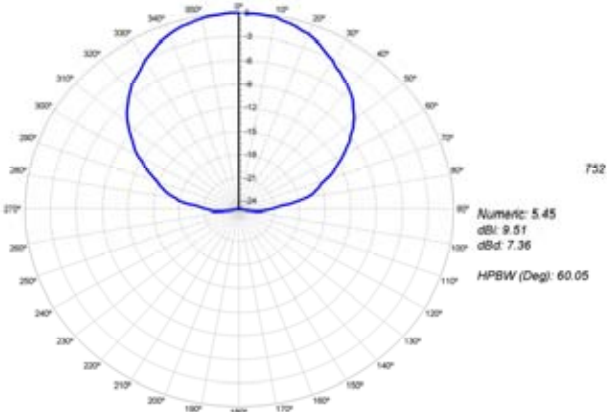
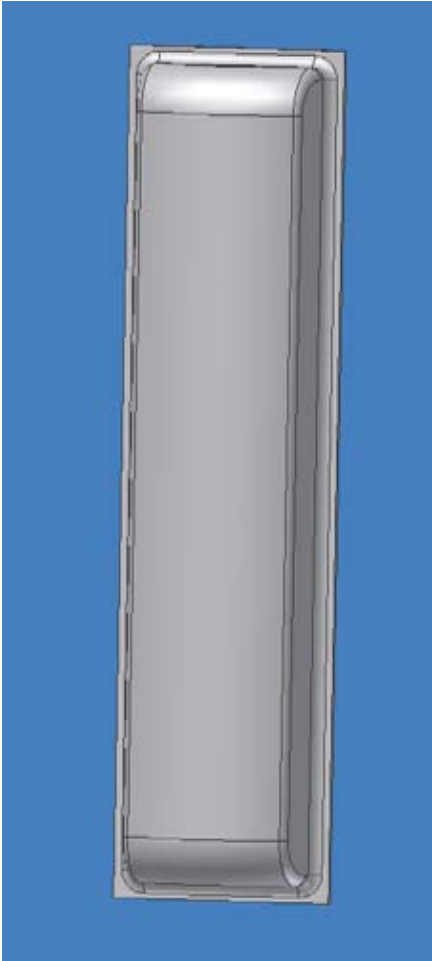
Gain(dBd) 10.4 8.7 7.9

7/16-DIN or 7/8" EIA Input Connector

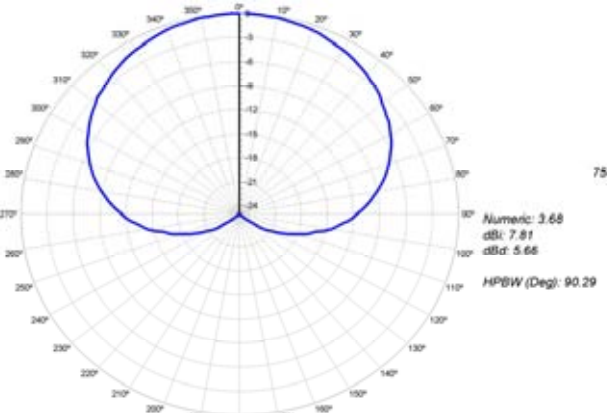
Horizontal, Vertical or Circularly Polarized



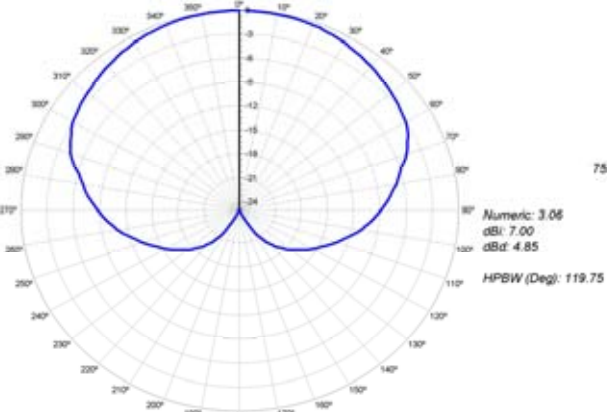
# 700 MHz ATC-7PX Azimuth Patterns



60 Degree



90 Degree



120 Degree

## 700 MHz PicoCell & Indoor



### ATC-71X65-F

65 Degree Sector

Full Band 698—806 MHz

6.4 dBd (8.5 dBi) Gain

<1.1 VSWR

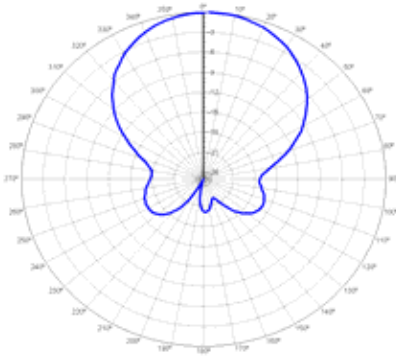
Horizontal or Vertical Polarization

500 W Max Input

N-Type Female Connector

Indoor Outdoor Use

12" x 12" x 3"



## Inbuilding Antennas

**ATC-710** 700 MHz Band V-Pol Omni  
<1.2 VSWR N-Type Female 8" x 8" x 4"

**ATC-W10** WideBand 700—2700 MHz V-Pol Omni  
<1.85 VSWR N-Type Female 12" x 12" x 4"

Unity Gain 100 W Max Input

## **ALIVE Telecommunications**

19108 S. Blackhawk

Mokena, IL 60448

[www.alivetele.com](http://www.alivetele.com)

Phone: 815 464 7869

Fax: 815 464 8390

Email: [info@alivetele.com](mailto:info@alivetele.com)